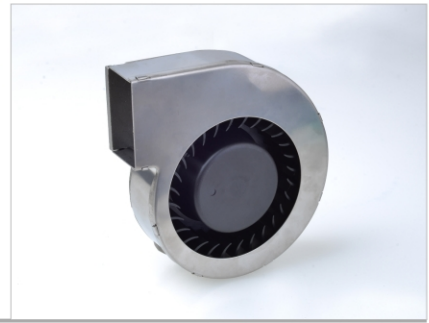


1232-28

120x112x32mm (4.72x4.41x1.26 in) - 28 blade



- Bearing System----- 2 Ball Bearing,
- Life Expectancy----- Ball 90000hrs @ 5200RPM @ 30°C
- Frame----- Aluminum AD12 Base / Stainless Steel Case
- Impeller----- Thermoplastic PBT+15% GF, UL94-V0
- Lead Wire ----- UL 1007, AWG 24, 260 ± 10mm, Red(+), Black(-)
- Protection ----- Locked rotor protection
- IP Grade ----- IP51, IP54, IP56, IP67



IATF16949:2016
ISO 9001:2015
ISO 14001:2015



Dim: 518x304x270mm
N.W.: 13.3 kgs
G.W.: 15.2 kgs
Q' TY: 40 pcs

FUNCTIONS	PART NUMBER	RATED (VDC)	LABEL CURRENT	ACTUAL CURRENT	POWER (WATTS)	SPEED (RPM)	AIRFLOW (CFM)(m³/min)	PRESSURE (mmAq)(In H ₂ O)	NOISE (dBA)	WEIGHT (Q' TY/CTN)
1a:IR 1b: AS 2a: FG 2b: RD 2c: RDb 2d: LD 2e: LDb 3a: VPWM 3b: IPWM 3c: PPWM 5a: TPWM 6a: RPWM 7a: CS	P1232Y12BALBxy-28	12 (07-14)	3.250	1.700	20.40	5200	42.91 1.22	51.47 2.03	61.64	330g (40pcs)
	P1232X12BALBxy-28		2.132	1.350	16.20	4600	37.96 1.07	40.28 1.59	58.45	
	P1232H12BALBxy-28		1.261	0.750	9.00	4000	33.01 0.93	30.46 1.20	54.81	
	P1232M12BALBxy-28		0.806	0.577	6.92	3400	28.06 0.79	22.01 0.87	50.57	
	P1232L12BALBxy-28	0.442	0.322	3.86	2800	23.10 0.65	14.92 0.59	45.51	330g (40pcs)	
	P1232Y24BALBxy-28	24 (15-27)	1.560	0.760	18.24	5200	42.91 1.22	51.47 2.03		61.64
	P1232X24BALBxy-28		0.949	0.675	16.20	4600	37.96 1.07	40.28 1.59		58.45
	P1232H24BALBxy-28		0.559	0.455	10.92	4000	33.01 0.93	30.46 1.20		54.81
	P1232M24BALBxy-28		0.390	0.300	7.20	3400	28.06 0.79	22.01 0.87		50.57
	P1232L24BALBxy-28		0.260	0.168	4.03	2800	23.10 0.65	14.92 0.59	45.51	
	P1232Y48BALBxy-28	48 (36-57)	0.560	0.400	19.20	5200	42.91 1.22	51.47 2.03	61.64	330g (40pcs)
	P1232X48BALBxy-28		0.420	0.336	16.13	4600	37.96 1.07	40.28 1.59	58.45	
	P1232H48BALBxy-28		0.290	0.221	10.61	4000	33.01 0.93	30.46 1.20	54.81	
	P1232M48BALBxy-28		0.190	0.150	7.20	3400	28.06 0.79	22.01 0.87	50.57	
	P1232L48BALBxy-28	0.120	0.084	4.03	2800	23.10 0.65	14.92 0.59	45.51		

Remark:

1. Part no. suffix: "xy" =Function detail or "x" =Function number. and "y" =customer ID
2. P series - Multifunction Extra High Performance series:
Uses a single coil differential type drive with higher efficiency and performance, for higher power demanding applications offering the complete line of functions.

